



ALL IN DATA FOR COMMUNITY HEALTH

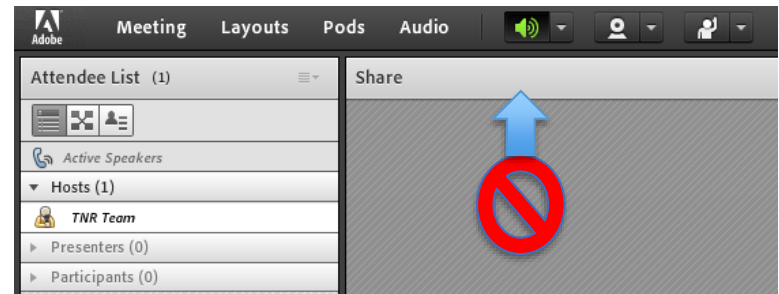
- Community Health Peer Learning Program
- Data Across Sectors for Health

Navigating Consent

September 7, 2016
1:30 – 2:30 p.m. EST

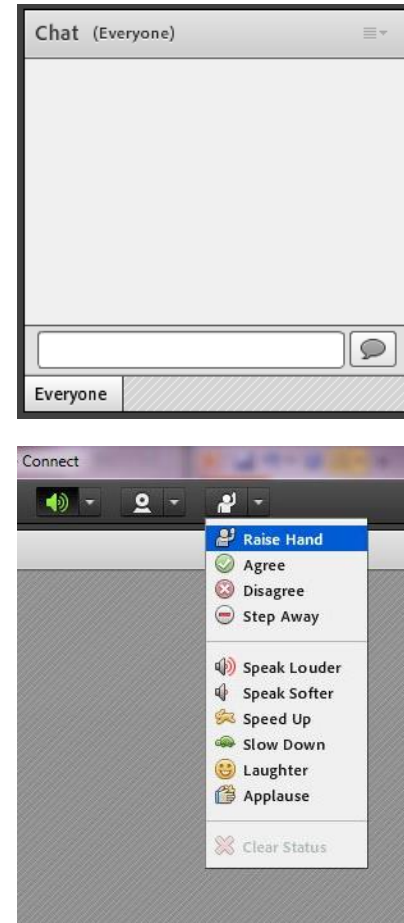
Meeting Information

- Conference Line: 1-866-269-6685
- Conference Code: 6763836672#
- Reminders:
 - Please **hard-mute your computer speakers** and the **speakers in the web conference**
 - Please **mute your phone line** when you are not speaking to minimize background noise
- Technical difficulties? Email us at chpinfo@academyhealth.org



Chat Feature

- To share your comments using the chat feature:
 - Click in the chat box on the left side of your screen
 - Type into the dialog box and click the send button
- To signal to presenters you have a question / comment:
 - Click on the drop down menu near the person icon and choose *raise your hand*



DASH and CHP are All In!

Community Health Peer Learning Program

- NPO: AcademyHealth, Washington D.C.
- Funded by ONC
- 10 Participant and 5 Subject Matter Expertise communities

Data Across Sectors for Health (DASH)

- NPO: Illinois Public Health Institute in partnership with the Michigan Public Health Institute
- Funded by RWJF
- 10 grantee communities

All In: Data for Community Health



1. Support a movement acknowledging the social determinants of health



2. Build an evidence base for the field of multi-sector data integration to improve health



3. Utilize the power of peer learning and collaboration

Purpose

1. Provide opportunities for communities to connect with thought leaders—each coming to the topic of consent with different expertise and perspectives
2. Address participants' questions related to consent and recommend various approaches or resources
3. Respond to specific use cases from communities on addressing consent
4. Stimulate active discussion that will help communities figure out concrete next steps

Presenters



Jane Thorpe, JD

Program Director,
Healthcare Corporate
Compliance program

Associate Professor,
Milken Institute
School of Public
Health



**Jennifer Bernstein, JD,
MPH**

Deputy Director,
Network for Public
Health Law



John Wilbanks

Chief Commons
Officer, Sage
Bionetworks



Carrie Hoff

Deputy Director,
County of San Diego

Connect with Us!

- Sign up for news from All In at dashconnect.org
- Follow us at [@DASH_connect](https://twitter.com/DASH_connect) and [@AcademyHealth](https://twitter.com/AcademyHealth) at [#CHPHealthIT](https://twitter.com/CHPHealthIT)
- Contact information for speakers
 - Carrie Hoff - carrie.hoff@sdcounty.ca.gov
 - Jane Thorpe - jthorpe@email.gwu.edu
 - Jennifer Bernstein - jbernstein@networkforphl.org
 - John Wilbanks - wilbanks@gmail.com
- [Evaluation](#)
- A resource list, slides, and recording will be available

